



hugla®



Our company was established in 1996 and was initially involved with all applications of heating cables – floor heating, gutter and pipe frost protection.

Since 2010, with a team of experts, we have become engaged in the production of electric heaters and are now the dominant supplier of surface storage heaters; our products marketed under the Hetta® and Hugla® brand.

The main components are produced exclusively by suppliers from the Czech Republic. Our annual production is in the thousands, so we work only with suppliers from this region and this allows us to work constantly and efficiently, in order to maintain quality and update technology.

Thanks to this standard, the quality of workmanship, in areas such as corrosion protection and product life is constantly improving. Although the principle of economical heating, based on partial accumulation and subsequent heat emission remains unchanged, we are still working to improve regulation and modernize the design.

Thanks to many years of experience and customer feedback, we define new requirements and constantly upgrade our products. We adapt our instruments to new modern ways of control and follow developments in IT technologies.

Since the beginning we have placed great emphasis on product quality and safety. For the satisfaction of our customers we provide high-quality expert advice and immediate technical service.

We ensure our production activities do not pollute the environment and that our products and materials are always environmentally friendly and comply with all health and safety regulations.

For added customer confidence; all our products are covered by the international certification authority TÜV.



ELREA s.r.o. has developed the Hugla® and Hetta® – direct electric, ceramic-storage heater, which is a very popular and efficient product in the domestic market, offering smart control SALUS®, ME108 and V8 with highly efficient partial heat storage technology.

Using patented special fireclay cells, the Hugla® heater can retain warmth for longer than a traditional convector heater. Because of its increased surface area, this can be up to 6 times greater than other models. The Hugla® and Hetta® has now been in production for 13 years.

We offer a wide spectrum of regulators for our heaters. The customer can choose from heaters without built-in controls – for houses with central or intelligent controls, or with wired controls. Most customers require built in controllers – we offer 4 basic possibilities:

- 1) **Easy analogy (knob) controller**
- 2) **Build-in programmable touch-display controller**
- 3) **Build-in programmable touch-display controller with WiFi, for Android and iOS**
- 4) **Build in wireless relay for different thermostats – non programmable, programmable or with wi-fi application and for smart home application**



The Controllers, located on the side of the heater for ease of use, can be adjusted for temperature, or both time and temperature, either manually or wirelessly, when using the optional application. These control systems have been designed to reduce energy bills and maximise controllability.

The electric storage heating panels are unique, mainly due to their ability to heat up any room quickly, uniformly, and economically. Their efficiency depends on large radiant area surface technology, which efficiently transmits heat into ribs and onto the radiator surface. Considerable savings on energy use is achieved due to the integrated fire-clay plates, being recharged for only about 20 minutes in an hour, distributing the heat for the remaining time.

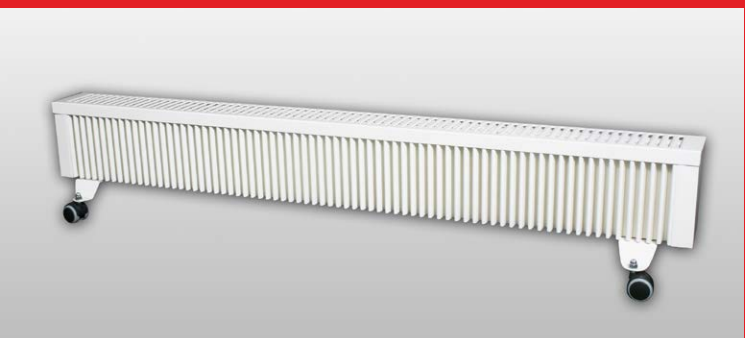
Hugla® heating panels

Suitable for residential, commercial, holiday facilities, or historical buildings.

Cost-saving, maintenance-free and safe.

Manufacturer's 15-year warranty for heater.

Storage core from the 2-cm fire-clay plates.



HUGLA® Technology



Our unique Combination Electric Heaters HUGLA® are designed to store the heat directly into the Ceramic Heat Retention Tablets without any loss of energy. When the heaters have achieved their required temperature the controller will cut power to the heater, but will continue to provide heat, which has been stored in the Ceramic Tablets, for up to 45 minutes with no further use of electricity. The Partial Storage Radiators will then use approximately 20 minutes of electricity per hour, depending on the building construction and the outside temperature.

An equal combination of 50% radiant and 50% convected heat gives a constant temperature throughout the room.

The contacts inside the heaters are protected with heat shrinkable insulated sleeves to ensure optimum safety. Multiple thermocouples within each heater provide overheat protection for additional safety. Hetta heaters are unique due to the metal ribs being individually 5x spot welded which helps reduce any noise during expansion and contraction. We use most up-to-date painting technology with infra continuous warming.

Hetta® heaters heat the whole room evenly due to their smart design. This special ribbing design provides six times of surface area compared to other heaters of the same size, while helping warm air to circulate throughout the room by convection which in turn eliminates costly hot spots at ceiling height. As a result, you will also experience enhanced heat at floor level; so no more cold feet! An equal combination of radiant and convection heating gives an even temperature throughout the room. Setting the Standard in Electric Heating.

Hugla® Heaters provide a complete product for reliability, performance and safety that is available in a number of styles and outputs.

They offer the perfect solution for replacing outdated storage heaters and for properties with no access to a mains gas supply or homes that require additional heating solutions.

The entire range are 100% energy efficient products. They are normally installed by qualified electricians, but can be simply plugged in.

Bespoke Colour Options.

Elrea s.r.o have recognised a growing trend for colour; in demand by architects, developers and homeowners alike.

Whatever your style of property or taste, our RAL colour options allow you to have separate Electric heaters in individual colours of your choice.

